

# SLSQ Procedure

<b>Subject:</b> Crocodile Procedure	<b>Department:</b> Lifesaving & Lifeguards
<b>Procedure No:</b> LSP 008	<b>Version No:</b> 1
<b>Effective Date:</b> 17/07/2024	<b>Approved Date:</b> 16/07/2024
<b>Revision Date:</b> 17/07/2027	<b>Approved by:</b> State Lifesaving Committee

## Purpose

This procedure provides all SLSQ lifeguards and lifesavers with the standard and process, in regions where crocodiles inhabit the environment.

## Scope

Surf Life Saving Queensland Clubs, Lifeguards and Staff.

## Definitions

<b>Crocodile</b>	a protected animal of the reptile family, that resides in the waters North of the Tropic of Capricorn.
<b>QPWS</b>	Queensland Parks and Wildlife Service
<b>MOP</b>	Member of Public
<b>POM</b>	Patrol Operations Manual
<b>LIMSOC</b>	Lifesaving Incident Management Systems Operating Console
<b>DES</b>	Department of Environment & Science

## Table of Contents

1. Actions in the Event of a Sighting
2. Actions in the Event of a Crocodile Attack
3. Flowchart
4. Further Advice and Information

## Procedure

### ACTIONS IN THE EVENT OF A SIGHTING

When a lifesaver or lifeguard visually sights a crocodile, the following procedure should be followed:

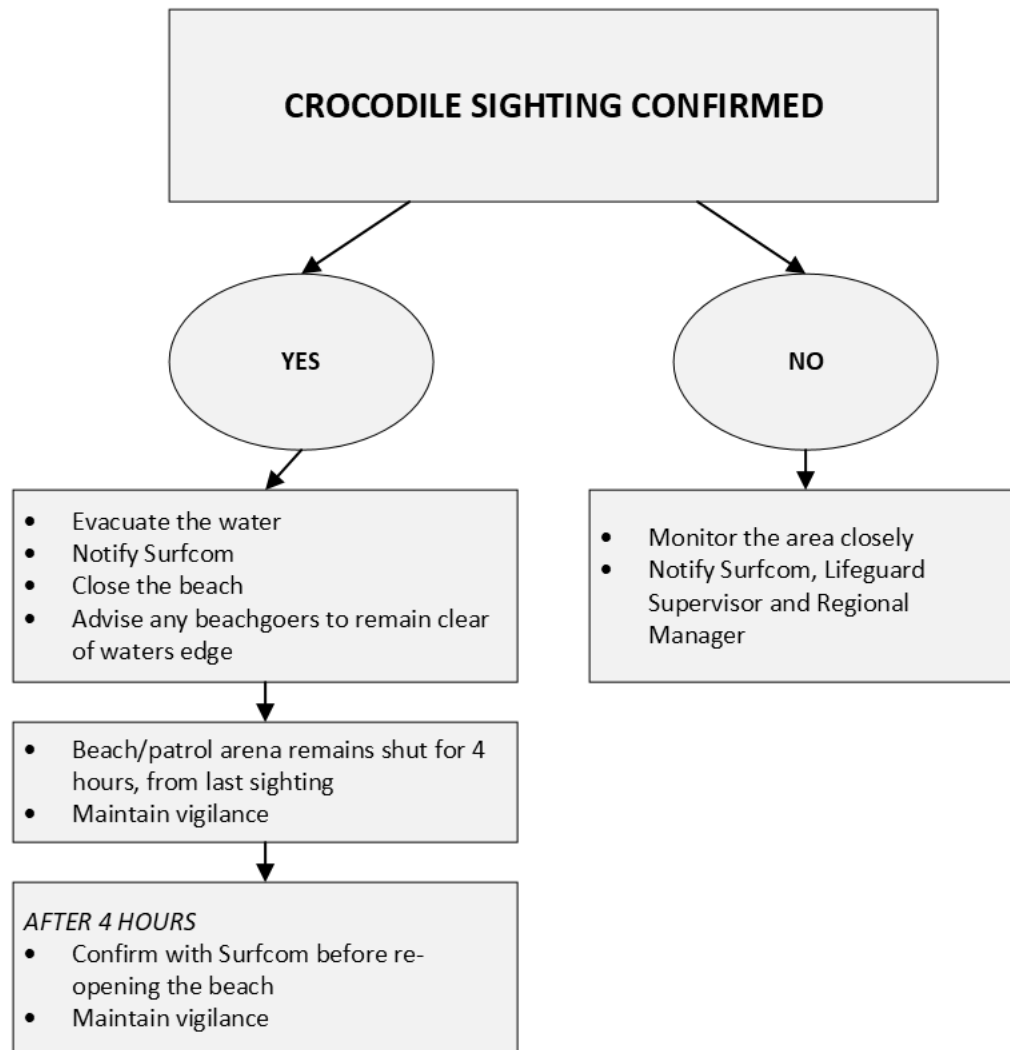
1. Confirm sighting of Crocodile by a credible individual.
2. Request all swimmers to leave the water.
3. Close beach in accordance with Section 8 of the POM [‘Closing Beaches’](#)
4. Advise Surfcom of closed beach and provide them with details of the sighting i.e., time of sighting, location, crocodiles movements & approximate size. Surfcom will log this in LIMSOC.

5. Whoever sighted the crocodile (lifesaver, lifeguard, or MOP) needs to report the sighting via the QWildlife App.
6. Advise beach visitors to remain clear of the water's edge.
7. Do not attempt to kill, capture, endanger or injure the Crocodile.
8. The Beach shall remain closed for 4 hours from the last confirmed sighting, unless the crocodile is captured/relocated by DES.

#### ACTIONS IN THE EVENT OF A CROCODILE ATTACK

- Return the patient to shore as quickly and safely as possible.
- Apply immediate first aid & contact Surfcom.
- Surfcom will call the ambulance, just stay with the patient.
- Follow all precautions outlined in the flowchart.

#### FLOWCHART



#### FURTHER ADVICE AND INFORMATION

If you ever see or come in contact with a crocodile, immediately report it, **DO NOT** attempt to kill, capture or injure the crocodile & remember that crocodiles are highly mobile. The longer it takes to report a sighting, the less likely it is the crocodile will be located.

If you require further advice or assistance, please contact Surf Life Saving Queensland on 07 3846 8000; QPWS or Department of Environment and Science (DES) within your region.

Below is a useful link for crocodile information:

[Crocodile conservation and management | Environment | Department of Environment, Science and Innovation, Queensland \(des.qld.gov.au\)](https://des.qld.gov.au/crocodile-conservation-and-management)

[Be CrocWise in croc country \(des.qld.gov.au\)](https://des.qld.gov.au/crocwise)